



Addressable fire detection control panel ALPHA 1100



The generation of ALPHA1100 fire detection control panels extends the application of the most contemporary technology to smaller and medium-sized facilities, maintaining the proper economical parameters of projects at the same time.

ALPHA1100 panels are certified according EN54-2, EN54-4, EMC and IVD standards.

Performances

By combining the existing performance of fire detectors and other elements compatible with HOCHIKI ESP communication protocol and developing its own interface modules that have a generic character and enable the integration of external measuring transducers for various purposes, QUADEL has expanded the range of systems from typically fire detection to other parameters relevant to facility monitoring.

Input elements

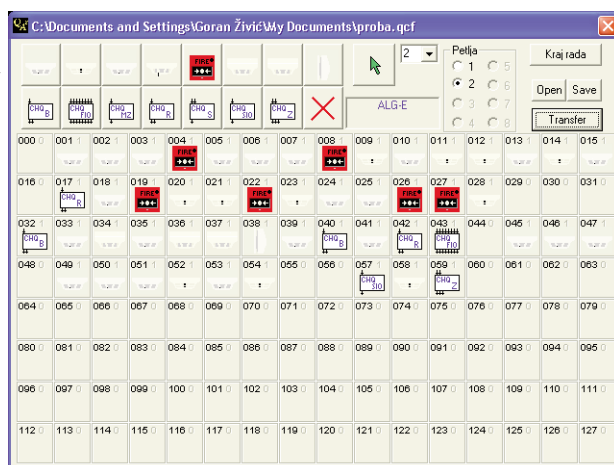
- Analog addressable elements such as smoke, heat detectors, but also other measuring transducers such as gas detectors, relative humidity meters, etc.

- Addressable ON/OFF type elements such as manual call points or general purpose interface modules.

- Conventional fire detectors such as BEAM smoke detectors, flame detectors, etc. Their connection to the address line (loop) is possible only with the use of appropriate interface address modules.

Output elements

Various light and sound signalization devices, as well as control elements, switches, etc. can be connected directly to the outputs of control panel or to the corresponding output modules which are integral elements of the address loop. By programming the matrix of their activation within the configuration program for the service computer, it is possible to form a very flexible structure of the system response depending on the input parameters. Typical application is control of fire fighting, ventilation, external equipment power supplies, etc.



External devices

- SQS-101A fire control panel (connection to the address line itself, occupying only one of the set of 127 addresses on the loop)

- Line dot matrix printer (connection to the serial communication channel

of the control panel using the internal RS 232 interface)

- Remote control panels QPT-3A (connection of one or more devices to a single multipoint line).

Alph@Net

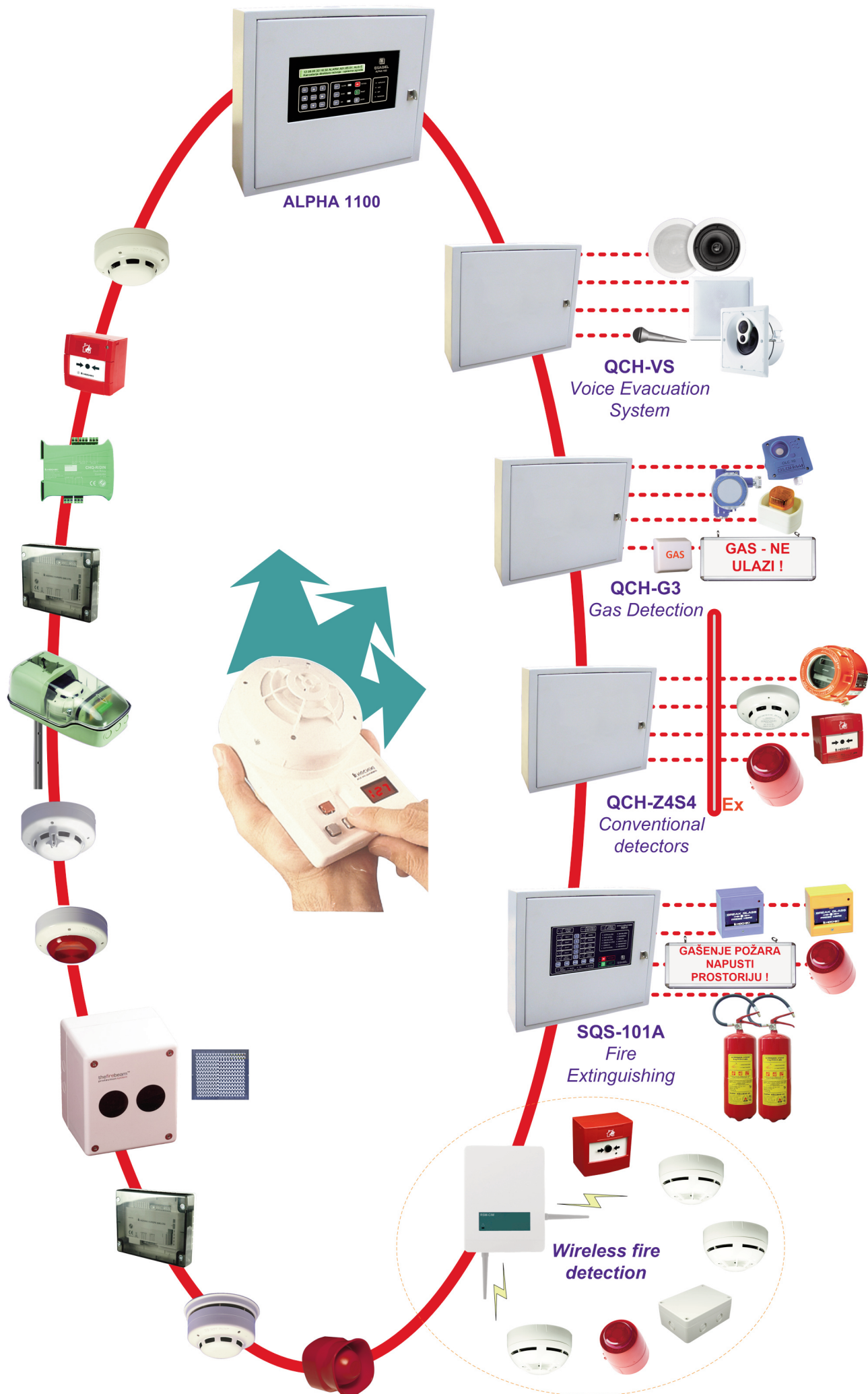
The expansion of telecommunications infrastructure in the domain of Internet and GSM network has enabled QUADEL to, by developing appropriate network hardware and software, give its systems a global character and remove barriers that existed until now in the centralization of monitoring and management functions of dislocated facilities.

In order to centralize the functions of supervision and management of the system, the following interfaces are available:

- QIN/ET interface module for Ethernet / Internet networking - ALPHA 1100 exchanges can, like any PC, be integrated into a single Internet network via their own Ethernet port. In this way, the functions of central monitoring and management of connected systems are enabled completely independent of their distance, using the existing Internet infrastructure.

- QIN/485 - interface intended for centralization of control via local multipoint line. For this purpose, the most suitable twisted pair signal cable max is 1 km long.

- QIN/GSM - interface module for remote signaling via GSM mobile telephony network.



ALPHA 1100 - Technical characteristics

Characteristic	Number	Description
Loop capacity of ALPHA1100-1L/2L	1/2	Up to 127 address elements per loop
LCD display	1	2 x 40 characters, LED backlight
Internal sounders outputs	4	- max load of 2A - line integrity control - individually programmed
Internal transistors outputs	4	- max load of 2A - individually programmed
Internal relays outputs	4	- max load of 5A - voltage free C-NC-NO - individually programmed
Internal ON/OFF inputs	8	- voltage free contacts - individually programmed
Auxiliary power output	1	12/24 VDC 2A max
Mains supply		230 VAC +/-15%
Back-up supply		2x12 VDC 7Ah/12Ah
Dimensions (w x h x d)		430 x 335 x 115 mm
Weight		7.5 kg (excluding batteries)
Case material		Plastified steel – Light gray (RAL7032)
Keyboard		Foil protected, industrial standard
Communication channels	2	USB / RS485 / RS232/Ethernet
Operating levels	4	Password protected system
Configuration parameters (on site programming via service PC)		- Textual description of the element's location (40 characters) - Alarm level for each sensor, separately for DAY and NIGHT organization - Zone allocation - Address elements type and the nature of their parameters - Terms for daily autocalibration, DAY/NIGHT organization - Cause effect table, etc...
Log Event Memory		Last 2000 events
Printer		External matrix with serial RS232 port (e.g. Epson LX 300+)
Remote signalization – annunciator QPT-3A		- Two-wire signal line: twisted pair, up to 1 km. - max 32 remote units
Networking – Alph@Net		- Ethernet/Internet - GSM - RS 485 multipoint, twisted pairs